

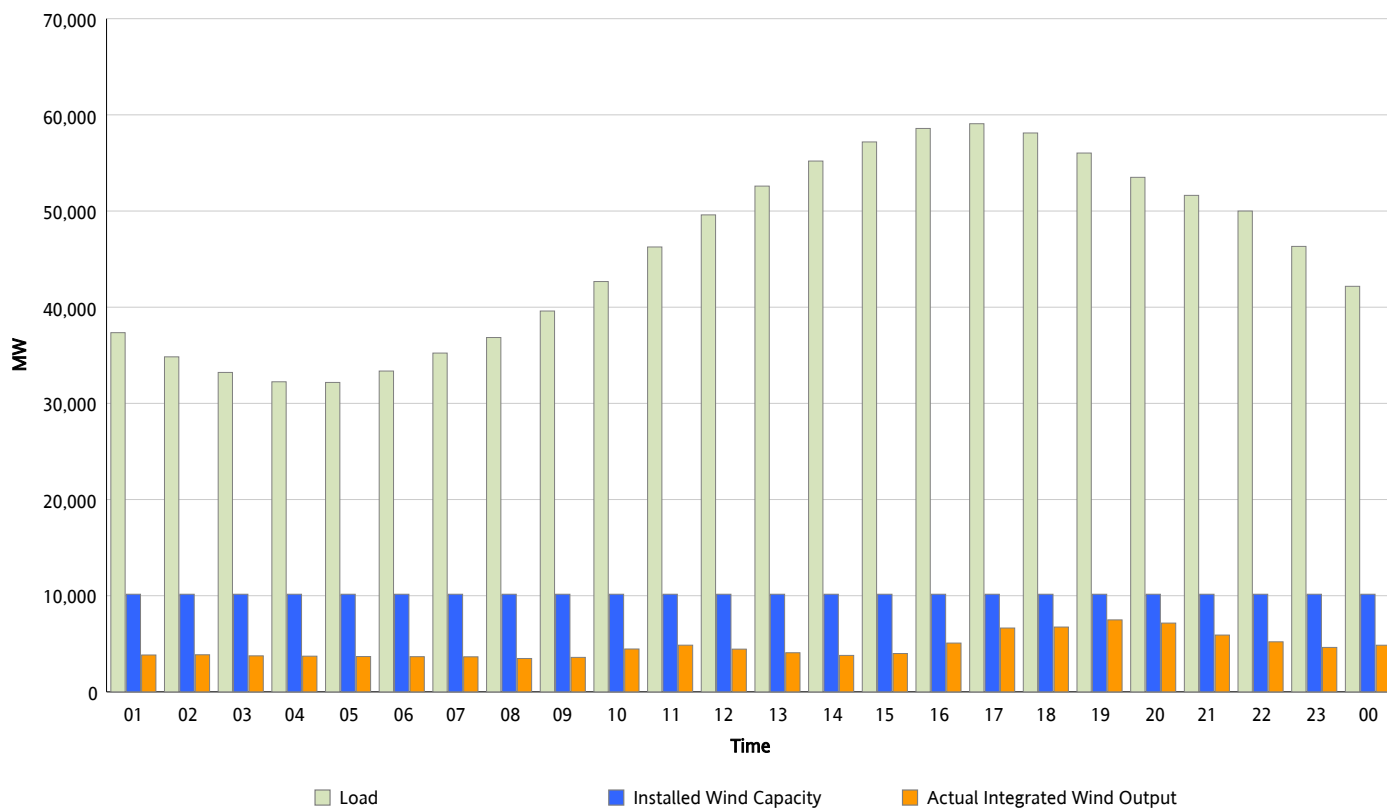


## ERCOT Grid Operations

### Wind Integration Report : 06/19/2013

Peak Load	59,080 MW
Load Peak Hour (HE)	17
Wind Over Peak	6,641 MW
Wind Record 05/02/13	9,674 MW
Max Wind Value*	7,879 MW
Wind Peak Time	18:46
Wind Integration %	14.15 %

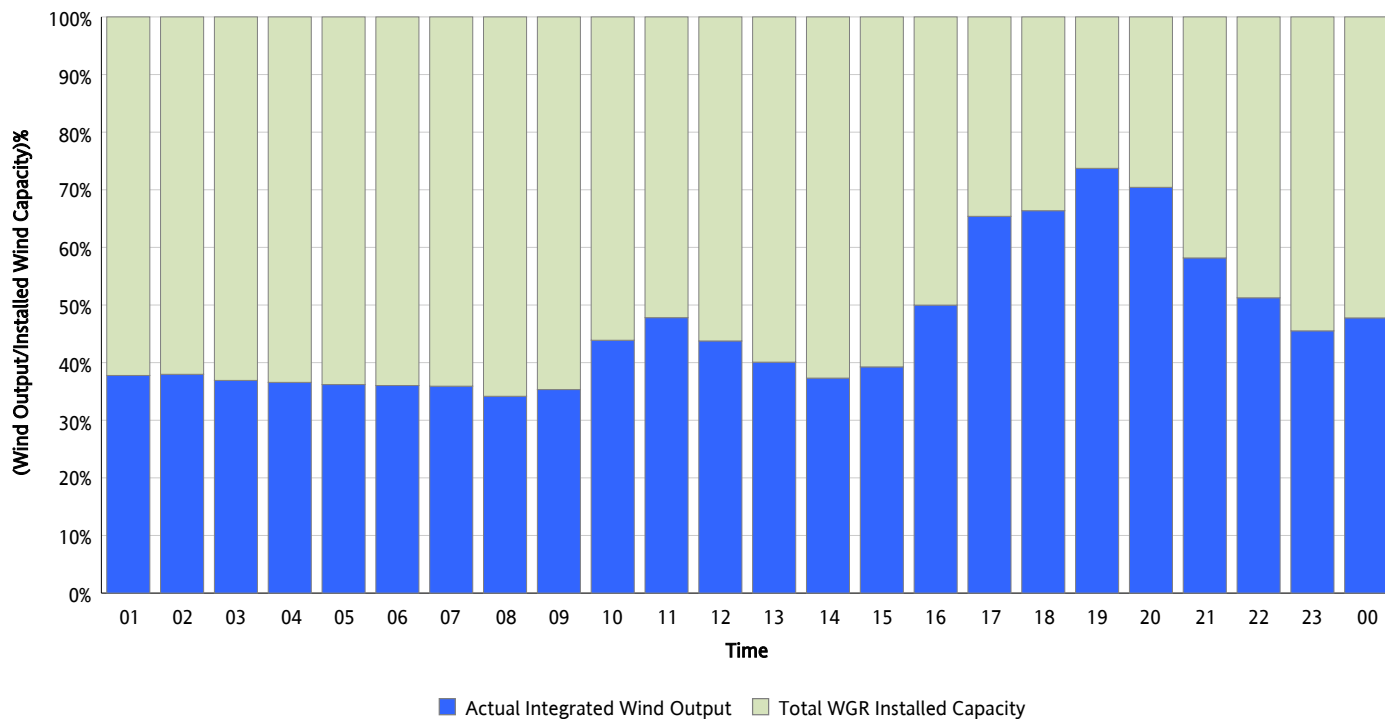
**Hourly Average Actual Load vs. Actual Wind Output**  
**06/19/2013**



*\* Wind Record and Wind Max represent instantaneous values and the rest of the values are integrated over the hour*

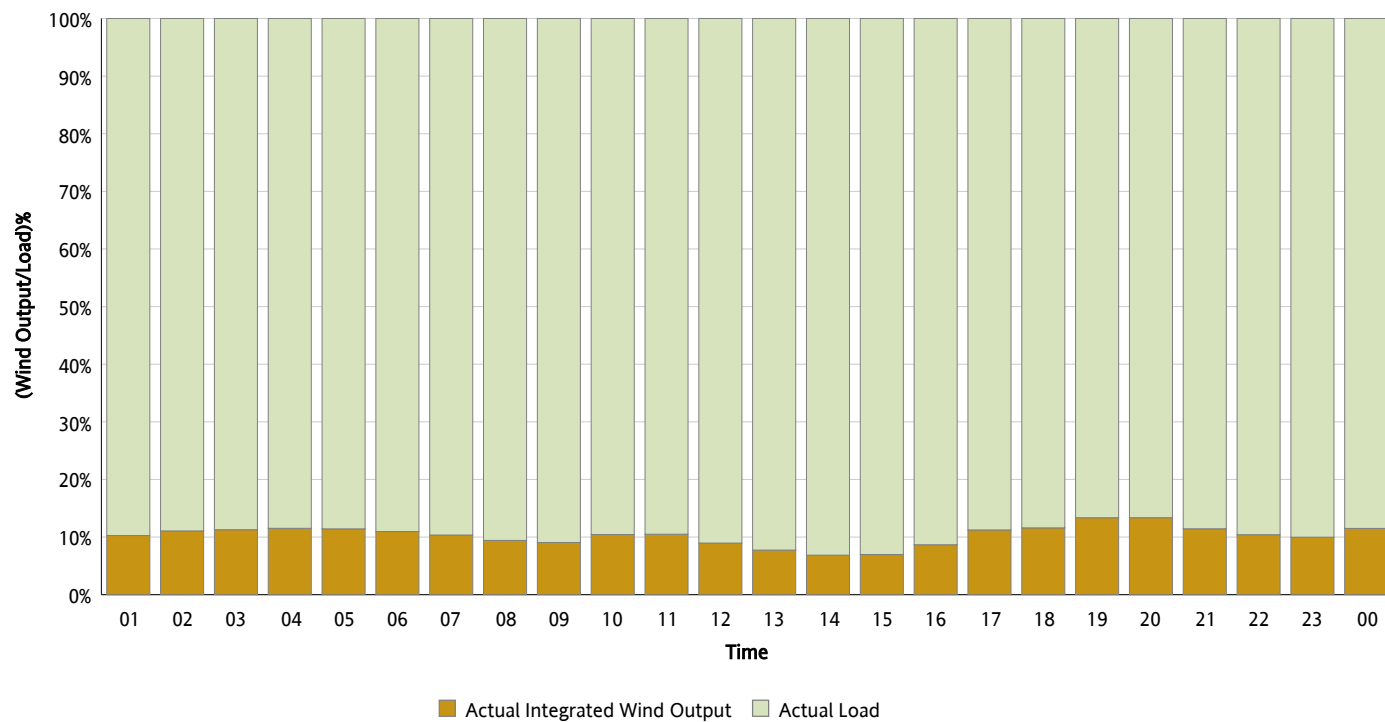
## Actual Wind Output as a Percentage of the Total Installed Wind Capacity

06/19/2013



## Actual Wind Output as a Percentage of the ERCOT Load

06/19/2013



## ERCOT Load vs. Actual Wind Output

06/12/2013 - 06/19/2013

